



Laser Tag M249 Minimi Casing Construction Guide

Version 0.5 Builty, FragTag, 11-02-2006



Copyright Notice

FragTag Minimi Construction Guide

Copyright© 2007 FragTag

All rights reserved. No part of this work may be reproduced in any form or by any means – graphic, electronic, or mechanical, including photocopying, recording, taping, or information storage and retrieval systems – without the written permission of the publisher.

Products that are referred to in this document may be either trademarks and/or registered trademarks of the respective owners. The publisher and the author make no claim to these trademarks.

While every precaution has been taken in the preparation of this document, the publisher and the author assume no responsibility for errors or omissions, or for damages resulting from the use of information contained in this document or from the use of programs and source code that may accompany it. In no event shall the publisher and the author be liable for any loss of profit or any other commercial damage caused or alleged to have been caused directly or indirectly by this document.

Feb 2007 Melbourne, Australia.

IMPORTANT NOTES

This document outlines the construction of a Laser Tag device that has a realistic appearance. Consult your local Police and firearms replica regulations before construction. May not be legal in all Countries.

This device should only be used on Private Property. If you live in the USA, you must paint the end of the barrel in bright orange.

FragTag is not liable for any incidents, accidents or any other event pertaining to the usage or construction of this device. The Builder assumes all responsibility.

Use this device in a responsible manner, and do not cause harassment or other troubles for innocent people.

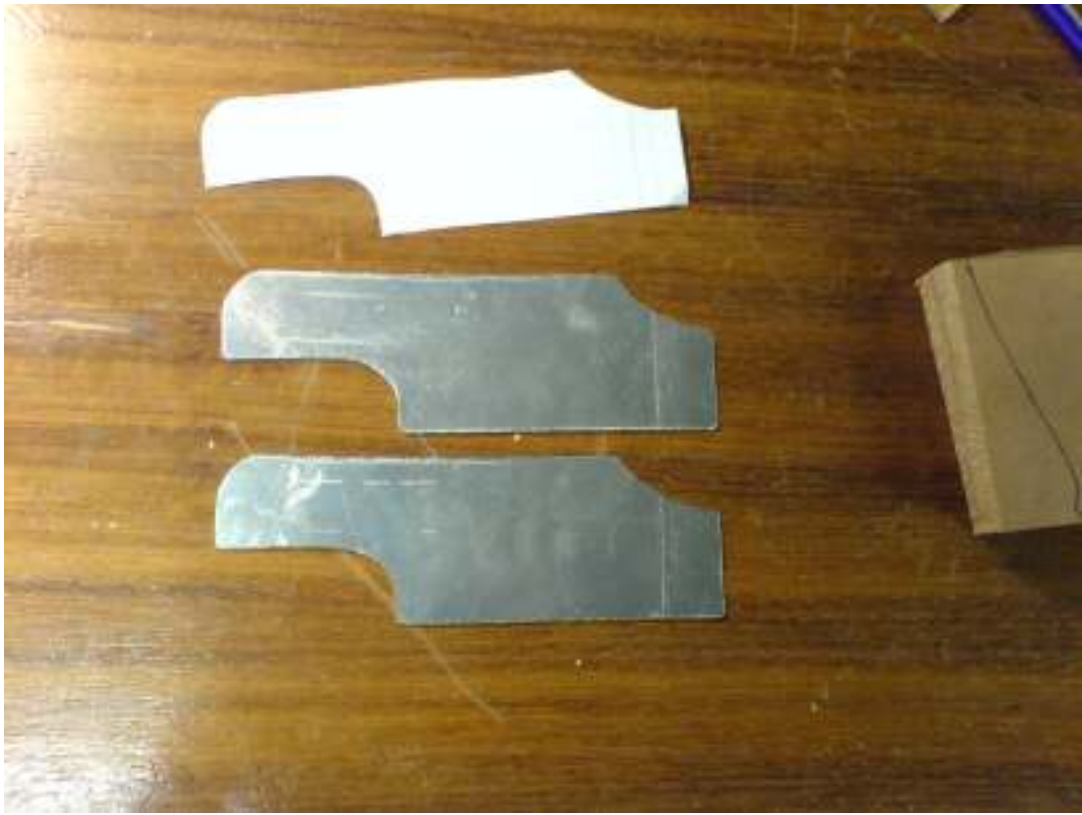
Table Of Contents

Copyright Notice.....	2
Table Of Contents.....	3
Central Body Assembly.....	4
Foregrip.....	4
Upper Lid.....	7
Cosmetic Barrel.....	11
Lens Assembly.....	13
Bipod Mount.....	15
LCD Display Mount.....	17
Switch Mounting.....	21
Keyswitch.....	21
Reload and Fire Mode Switches.....	22
Odin and Charge Port Mounting.....	24
Ammo Box Assembly.....	26
Attachment Bracket.....	27
Speaker Mount.....	32
Battery.....	34
Painting.....	36

Central Body Assembly

Foregrip







Upper Lid

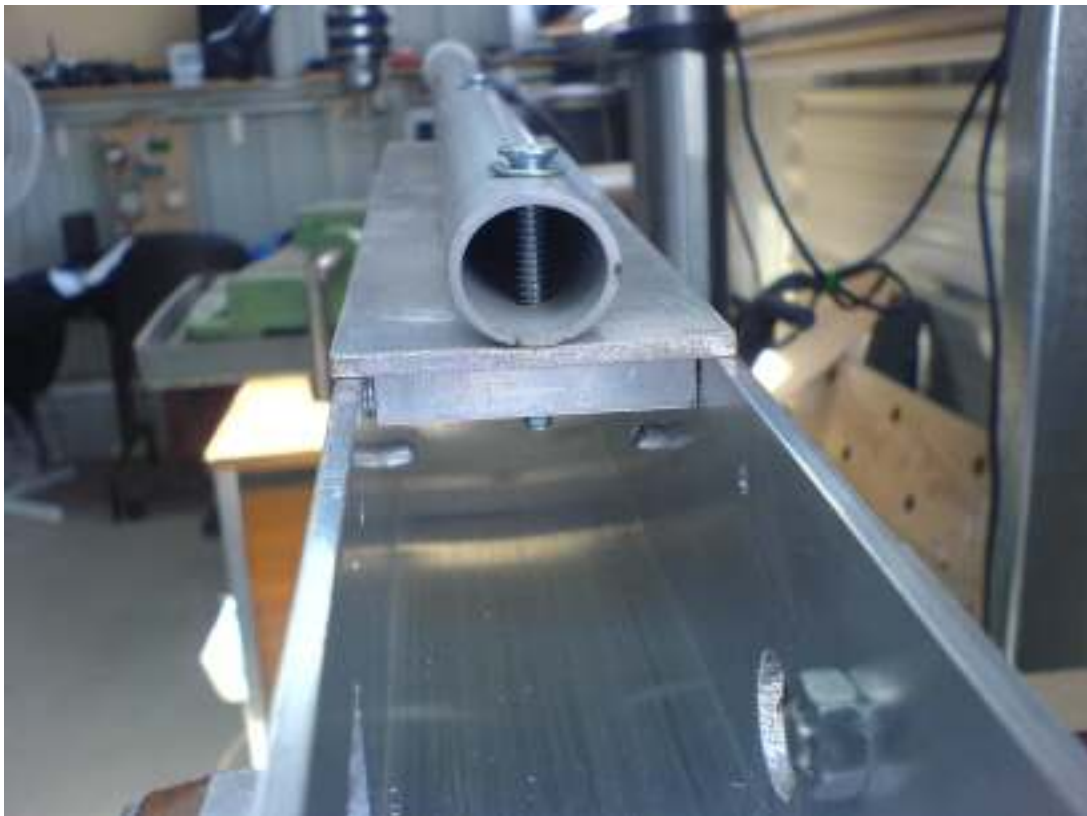








Cosmetic Barrel

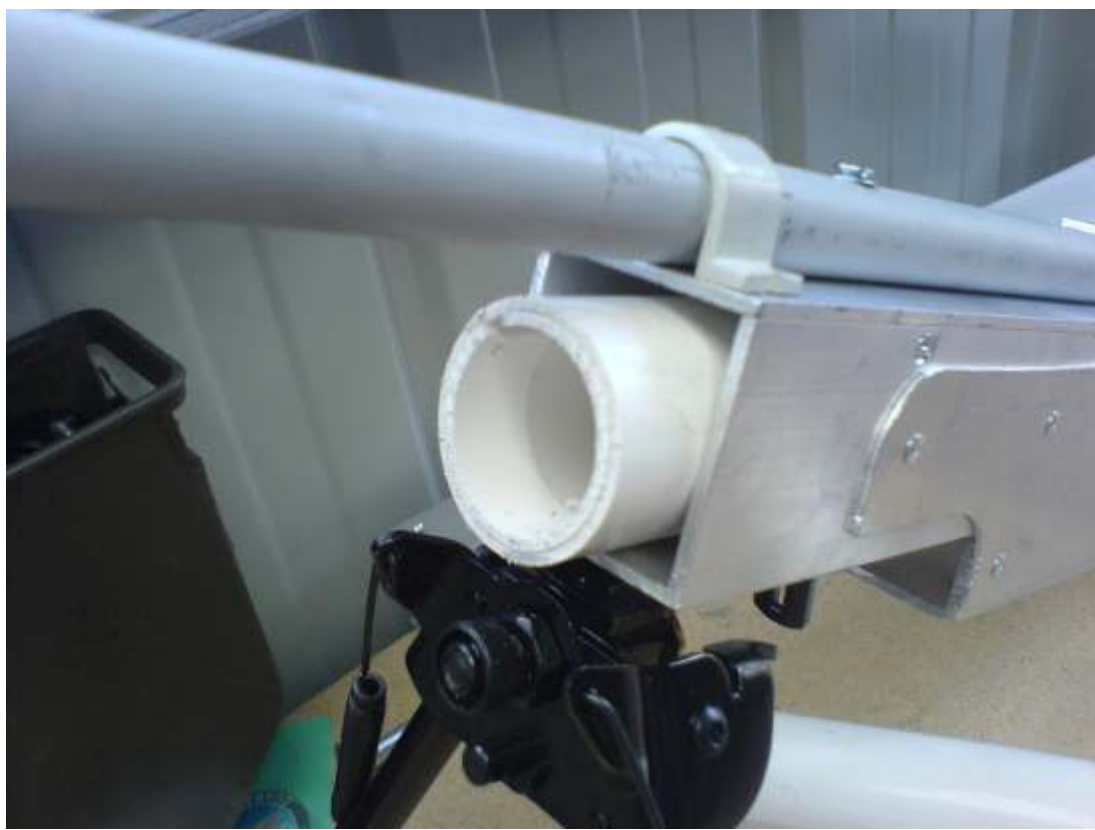






Lens Assembly







Bipod Mount

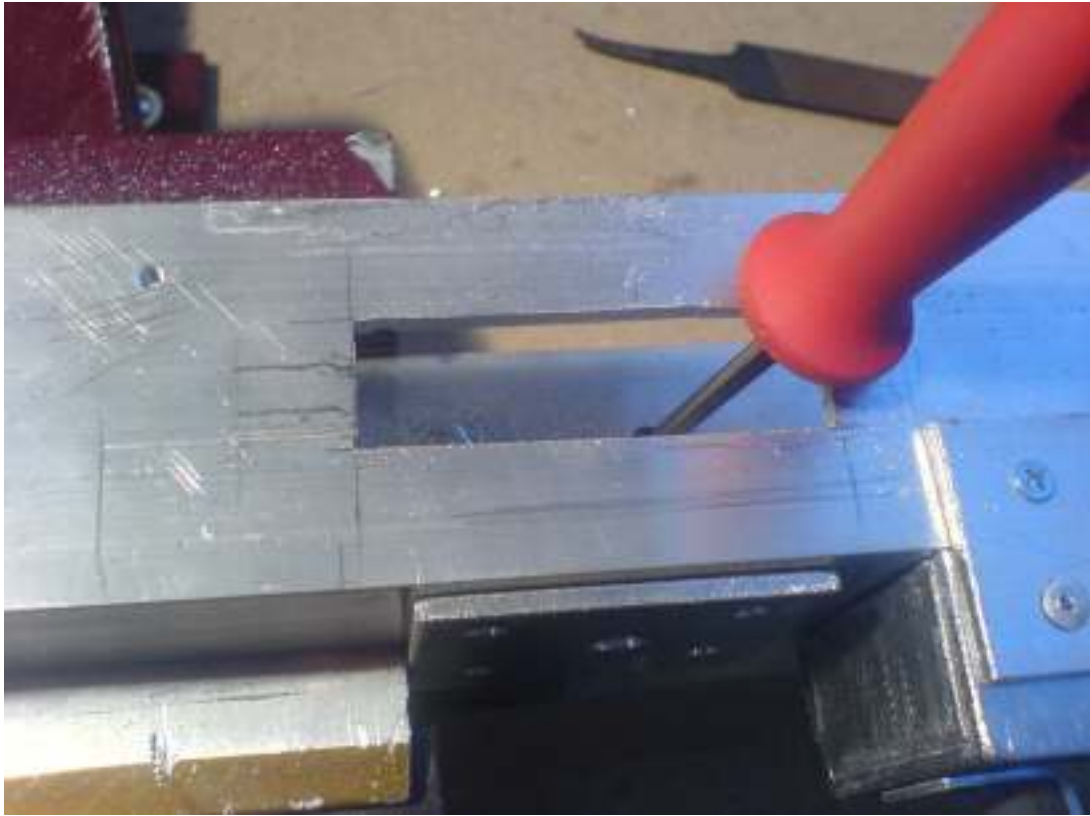




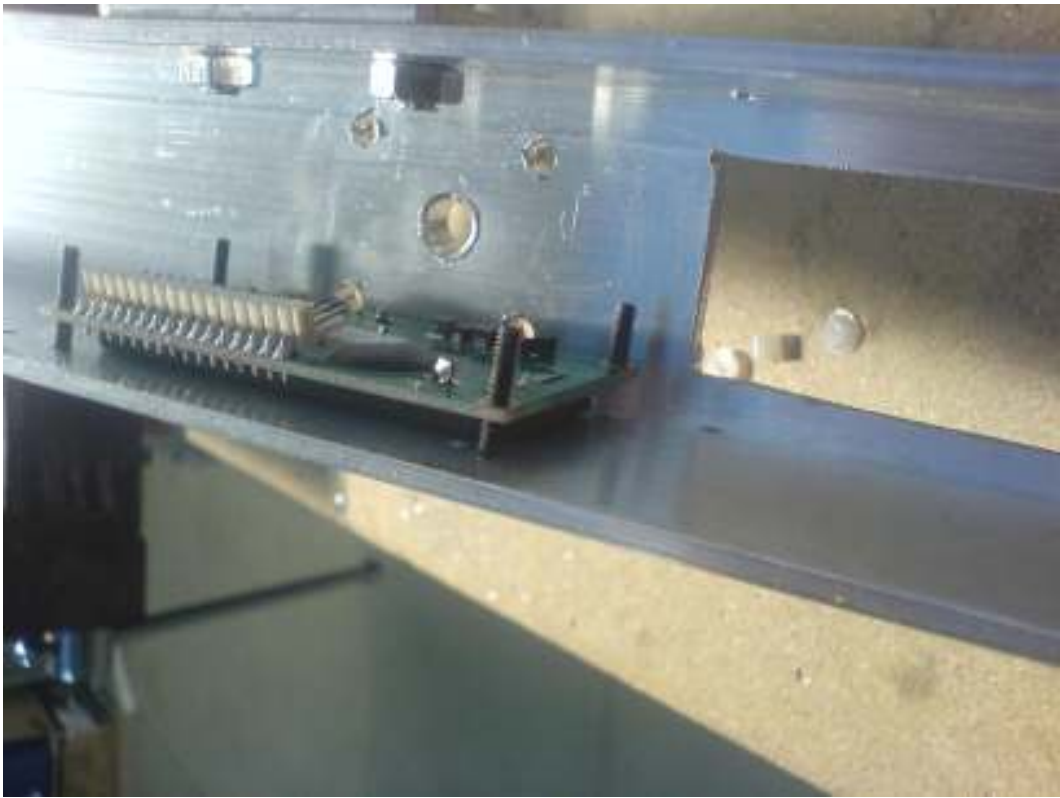


LCD Display Mount









Switch Mounting

Keyswitch



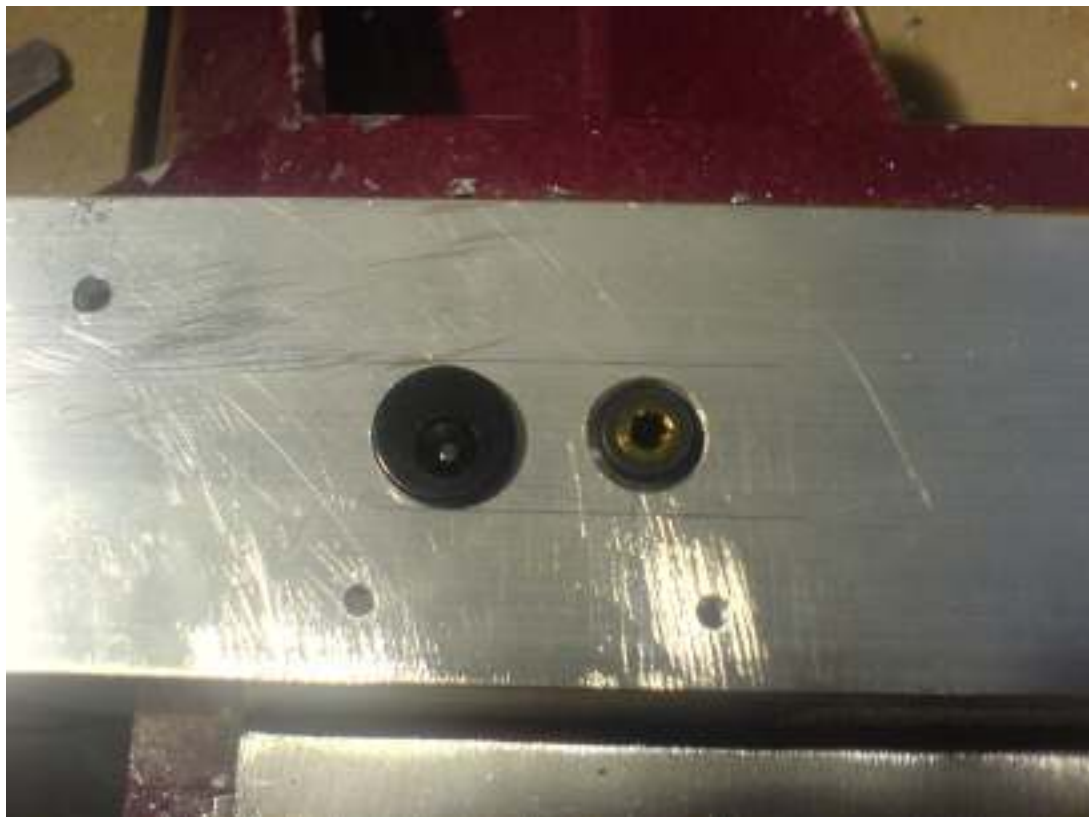


Reload and Fire Mode Switches





Odin and Charge Port Mounting



Ammo Box Assembly

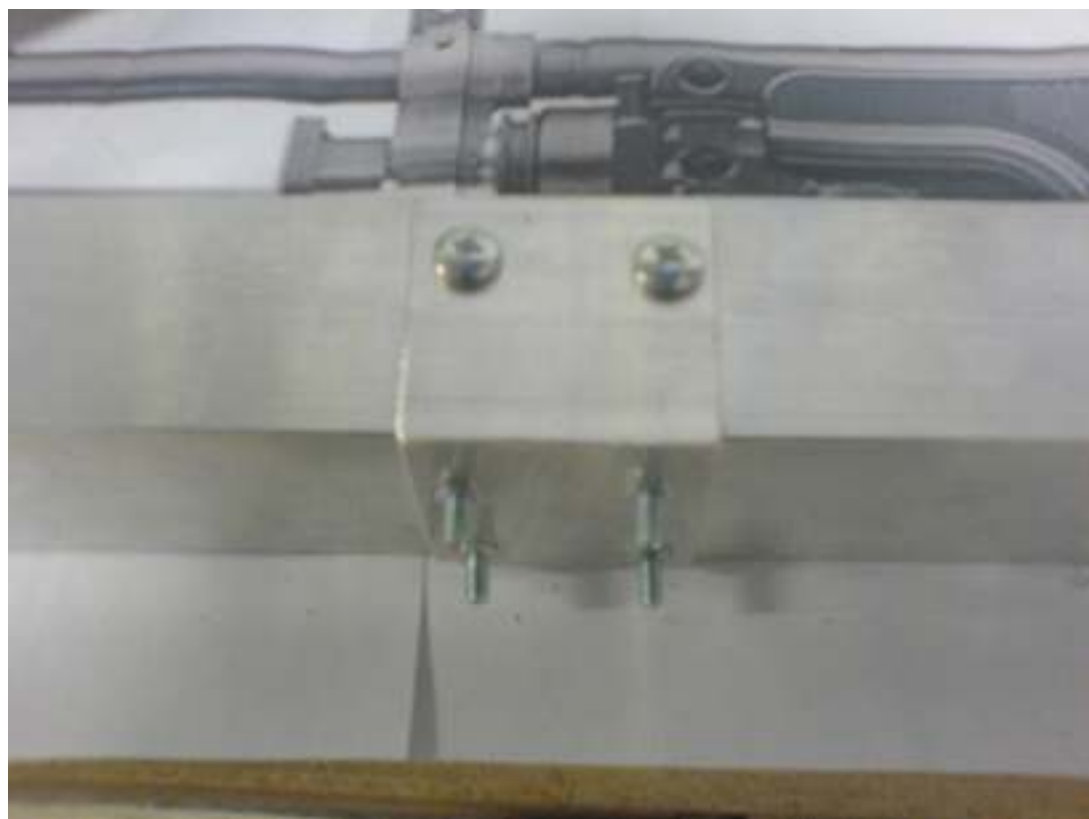
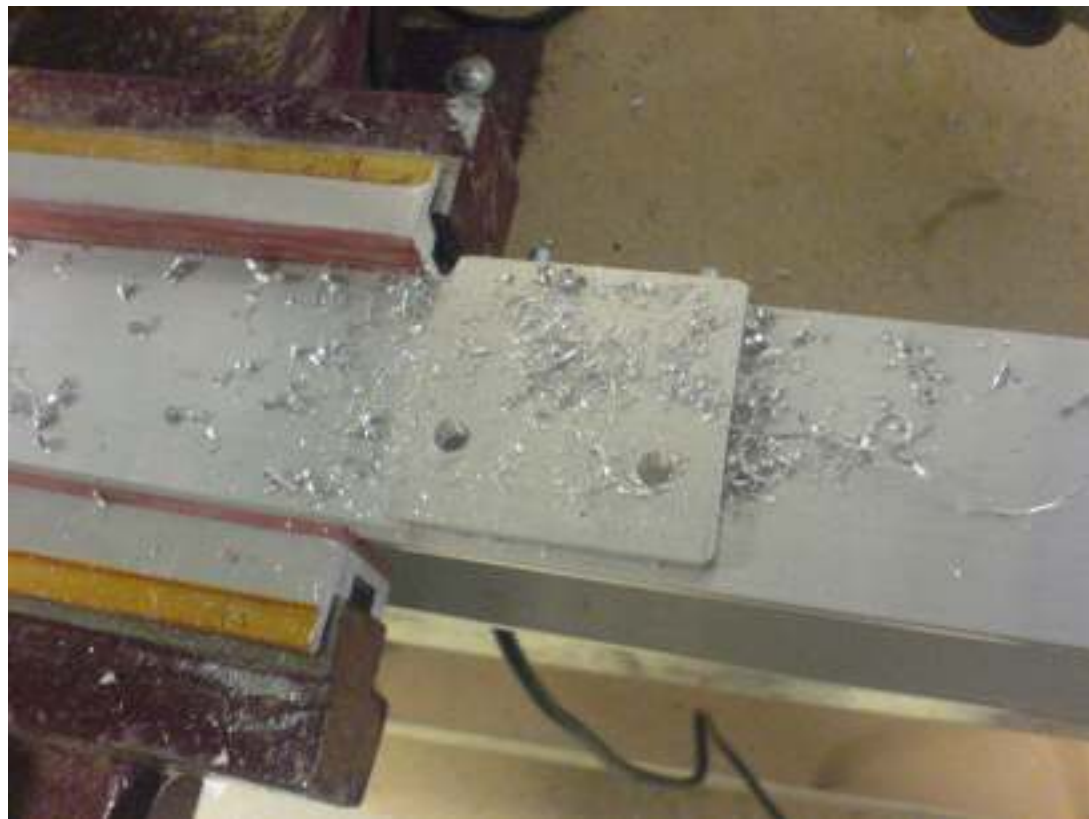


Attachment Bracket











Speaker Mount







Battery



Painting





